

manufacturing

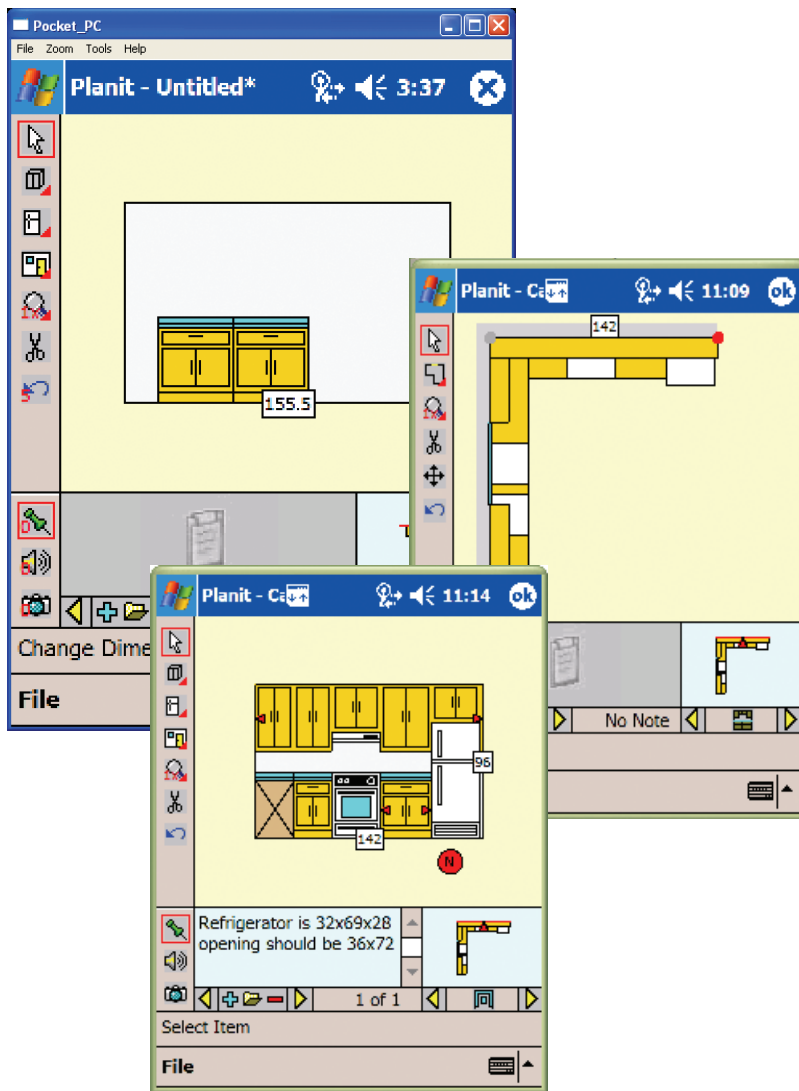


jobsite companion



JOBSITE COMPANION

Jobsite Companion, a new product from Planit Solutions Inc., is a software tool that runs on a PDA device and enables the cabinetmaker out in the field to input room and cabinet dimensions, take notes, mark electrical locations, attach digital photographs and feed this information directly into their Cabinet Vision or Cabnetware design and CNC manufacturing programs.



Woodworkers looking for an easy-to-use software tool that will speed up their Design to Manufacturing process—beginning with field measurements, through to design and manufacturing, and then on to the installation—should consider the advantages of Planit's Jobsite Companion.

Jobsite Companion is for cabinetmakers looking for every opportunity to become more efficient gathering job related data. Jobsite Companion allows information to be gathered in a digital format at the source, eliminating costly translation mistakes later.

Jobsite Companion continues Planit's emphasis on supporting the needs of the woodworking market, by supplying technology to cabinet makers that allows them to be even more competitive against foreign and domestic competition. Jobsite Companion increases the accuracy and speed of needed field/site data collection. Furthermore, with ability to capture images of the site, manufacturers can collect data that offers them the detail required to accurately bid on projects. This ability helps manufacturers maintain a profitable business.

Minimum System Requirements:

PDA

Support for Microsoft Windows Mobile 2003—Release 2 or higher. The screen display operates in portrait mode at a 3-to-4 aspect ration. Typical display resolutions include 240x320 and 480x640.

Computer

Windows 2003, XP or higher

Cabinet Vision 4.0 or higher or Cabnetware 8.0 or higher



800 280 6932

screen2machine@planitsolutions.com

www.planit.com